

# TOXOPLASMA GONDII IN CEREBROSPINAL FLUID

Pages with reference to book, From 230 To 230

Editor, *Toxoplasma gondii* is a rare cause of meningitis. Here we report a case of one year old child who presented with low grade fever and fits. Physical examination was essentially normal. His haemoglobin was 13.2G%. Total and differential leucocyte counts and ESR were normal. Blood smear was negative for malarial parasite and both views of x.ray skull were also normal. A lumbar puncture was done. CSF protein, sugar and chloride were normal. IgA and IgM antibodies specific to *Toxoplasma gondii* were also negative. Cell counts was 50/cmm. On the basis of high cell count CSF smears were stained with grains and leishman's stains. On microscopy typical crescent shaped *Toxoplasma gondii* were identified. Further confirmation of parasite was done with giema and alkaline methylene blue stains (Figure).

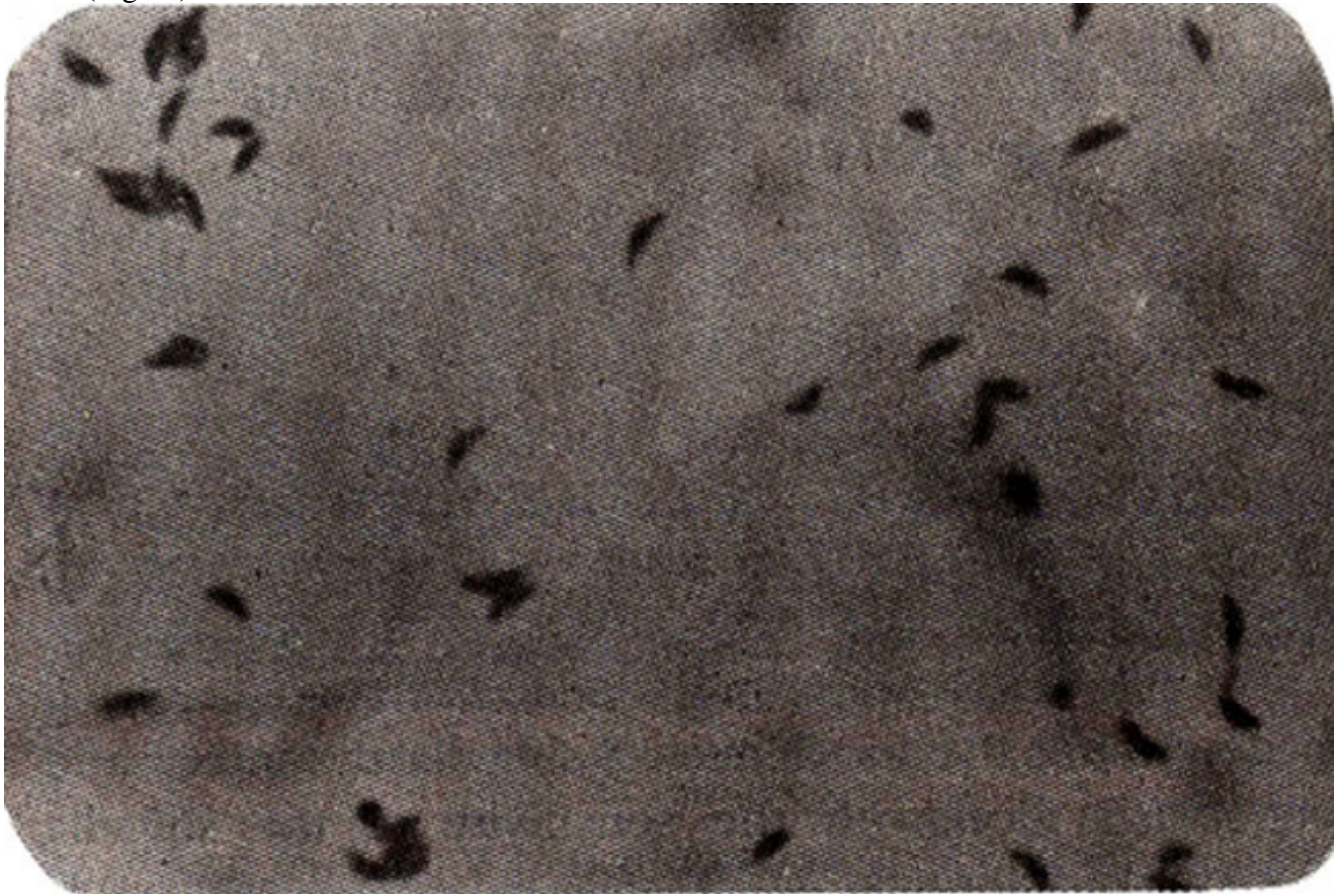


Figure. Typical crescent shaped *Toxoplasma gondii*.

He was discharged after treatment and did not come for follow-up. It is postulated that he had a cyst in the brain which ruptured and released parasite in the CSF. In endemic areas toxoplasmosis should also be considered as a cause of meningitis.

Mughis uddin Ahmad

\*Amtul Hafiz Department of Pathology, Abbasi Shaheed Hospital and \*Department of Microbiology, Basic Medical Sciences Institute, Jinnah Postgraduate Medical Centre, Karachi.